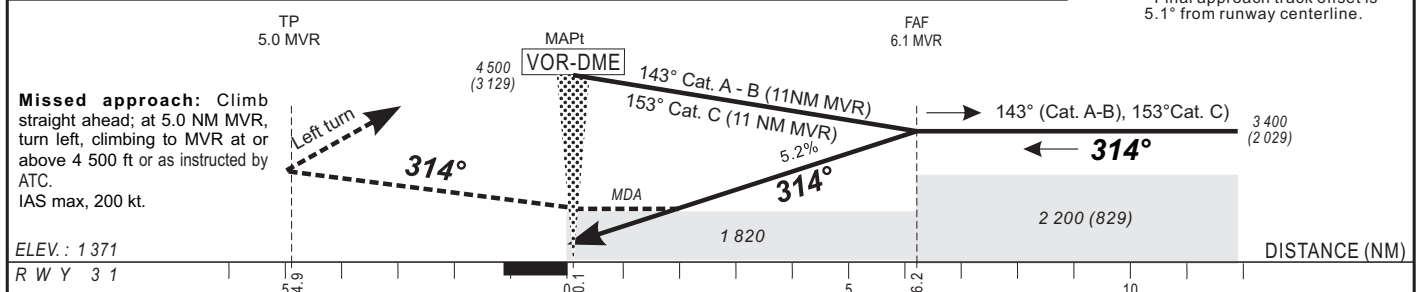


Distance to MVR (NM)	FAF		6	5	4	3	2	1	Notes : - Timing not authorized for defining the MAPt. - Final approach track offset is 5.1° from runway centerline.
Altitude (ft)	3400		3370	3050	2730	2410	2090	1770	



CAT	VOR-DME				CIRCLING (3)				RVR for take-off: CAT A - B - C : 400
	OCA (OCH)	MDA	MDH	RVR(1) RVR(2)	OCA (OCH)	MDA	MDH	VIS	
A	1785 (414)	1790 (420)		1200 1500	2082 (691)	2090 (700)		1500	Timing FAF / MAPt 6.1 NM
B	1785 (414)	1790 (420)		1300 1500	2082 (691)	2090 (700)		1600	
C	1785 (414)	1790 (420)		1400 1800	2231 (840)	2240 (840)		2400	
D									

Notes :	100		110		120		130	
	KT	MIN SEC	KT	MIN SEC	KT	MIN SEC	KT	MIN SEC
(1) With approach lights	90	4 Min 04	140	2 Min 37	100	3 Min 40	150	2 Min 26
(2) Without approach lights	110	3 Min 20	160	2 Min 17	120	3 Min 03	170	
(3) Daytime only - OCH and MDH AAL.	120	3 Min 03	170		130	2 Min 49	180	

CORRECTIONS : First edition.